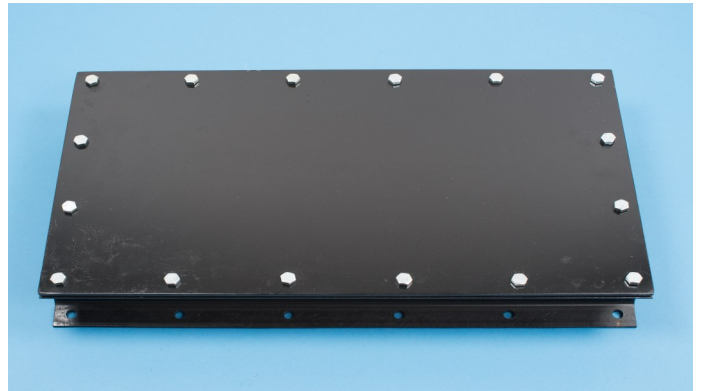
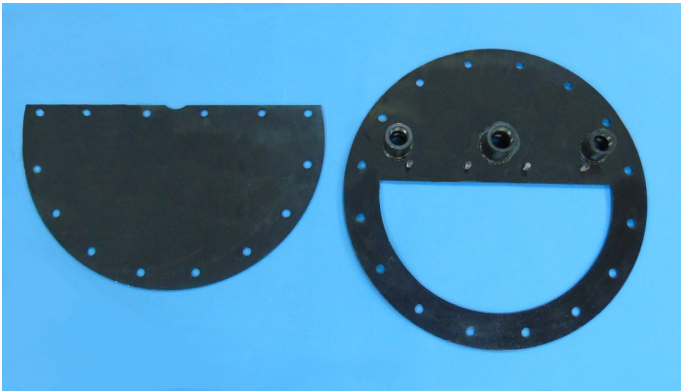


Every Mechanical Gauge / Overfill Switch Should Have a Maintenance Access



The GSI Maintenance Hatches are built for ease of maintenance; Carbon Steel, Proper Gaskets, and 316 Stainless Steel Bolts.

The removable cover lid allows you access to calibrate or maintain equipment that is fully or partially installed within the tank. Example: On a mechanical gauge, floats or tape can be inspected without bringing the tank out of service. High Level Alarm Switch displacers can be inspected, replaced or trip points calibrated.

Maintenance Hatches should be installed on all new tanks with all instruments requiring in tank maintenance or calibration. Two types of maintenance hatches are available, Rectangular Hatches (welded to the tank) and Circular Hatch covers (In service cover replacements) that are designed to replace existing API 20" and 24" covers.

The API Hatch covers are extremely useful when there are no existing tank openings for the mounting of an in-service tank gauge, temperature averaging probe, high level alarm switch, fixed vapor space monitor, second gauge theft hatch, etc.

Contact GSI for a Maintenance Hatch that fits your specific needs.



For more information contact Gauging Systems Inc. at +1 (281) 980-3999 or gaugingsystemsinc.com

